

G r o m m e t s / M o u n t s

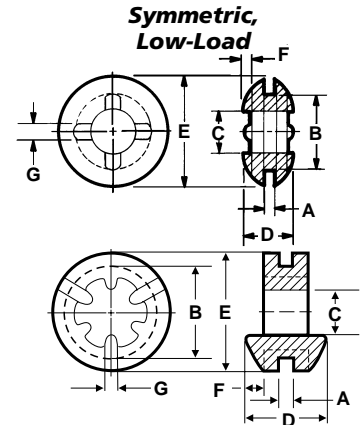
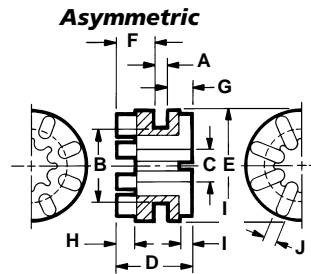
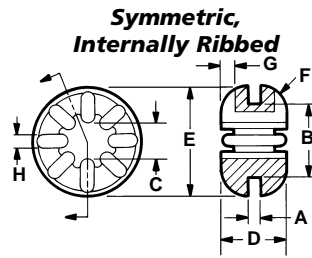
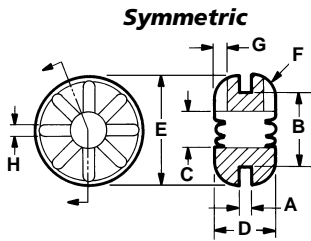
The interrelated dynamics of multiple motors, fans or blowers, actuators and other mechanisms inside OEM and transportation equipment can present problems that prove nearly impossible to define precisely. And product designers also must consider noise control, not to mention unpredictable vibration and shock inputs from external sources.

That process has been simplified, though, with a broad line of standard isolators and mounts molded from proprietary, highly damped ISODAMP vinyl and thermoplastic and ISOLOSS urethane elastomers. With numerous configurations and materials formulations available, E-A-R isolators offer extensive design flexibility. Custom-engineered isolators, plus a versatile thermoplastic rubber formulation—VersaDamp thermoplastic rubber materials with selectable damping and

durometer—expand the options even further. (See page 13.)

E-A-R mounts can provide shock control for computer disk drives, meeting demanding space constraints of even miniature and sub-miniature drives. They also control noise, vibration, shock and motion in computer printers and peripherals, and in precision equipment of all types, including medical, office and laboratory equipment.

- Provide high performance energy control in minimum sway space
- Variety of formulations, engineered to perform in discrete temperature ranges
- Soft and pliable yet physically strong
- Excellent physical integrity

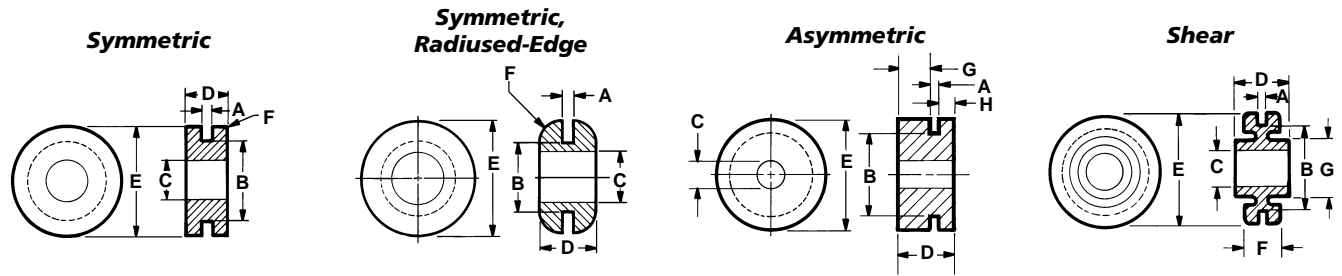


Family	Description	Load (lbs)	Dimensions (inches)								
			Recommended Maximum	A Plate Thckns.	B Hole Diam.	C Inside Diam.	D Overall Height	E Outside Diam.	F Edge Radius	G Rib Height	H Rib Width
ISODAMP											
RIBBED GROMMETS	Symmetric	G-401	6.0	.063	.375	.224	.313	.563	.125	.063	.063
		G-402	6.0	.125	.375	.226	.375	.563	.125	.063	.063
		G-403	6.0	.063	.375	.276	.313	.625	.125	.063	.063
		G-404	6.0	.125	.375	.281	.375	.625	.125	.063	.063
Symmetric, Internally Ribbed		G-410	3.0	.057	.250	.155	.230	.379	.050	.040	.050
		G-411	6.0	.063	.375	.188	.323	.563	.130	.063	.063
		G-412	3.0	.031	.250	.158	.230	.379	.050	.040	.050
Asymmetric		G-430	5.0	.055	.375	.180	.395	.560	.210/.130	.100/.065	.062
		G-431	8.0	.055	.560	.172	.390	.750	.210/.125	.100/.065	.062
Symmetric, Low-Load		G-427	1.5	.049	.312	.180	.195	.440	.025	.056	
		G-461	0.3	.037	.307	.157	.271	.393	.063	.051	
		G-462	0.3	.047	.304	.153	.276	.393	.063	.051	

For C-1002 material, indicate "-1" after part number (e.g. G-401-1)
 For C-1105 material, indicate "-2" after the part number (e.g. G-401-2)
 For C-1100 material, indicate "-3" after the part number (e.g. G-401-3)
 For VersaDamp material, indicate "-formulation number" after the part number (e.g. G-401-2325)

	C-1002	C-1105	C-1100	VersaDamp
Standard Grommet Color	Blue	Turquoise	Yellow	Black
Service Temperature Range	55F-105F (13C-41C)	80F-130F (27C-54C)	95F-145F (25C-63C)	-40F-212F (-40C-100C)

Dimensions given here are nominal. Exact specification print available on request.

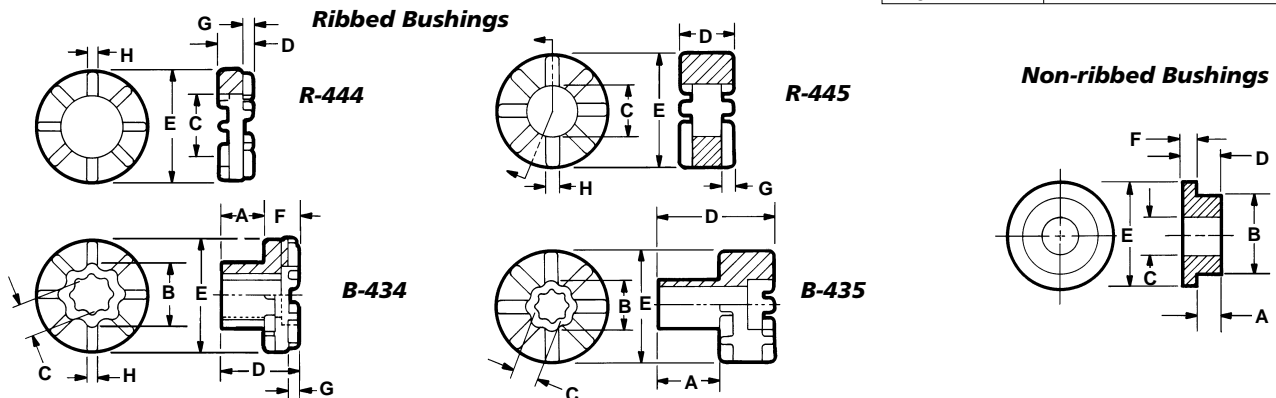


Family	Description	Load (lbs)	Dimensions (inches)								
			Recommended Maximum	A Plate Thckns.	B Hole Diam.	C Inside Diam.	D Overall Height	E Outside Diam.	F Edge Radius	G Lg. Flg. Height	H Sm. Flg. Width
ISODAMP	NON-RIBBED GROMMETS Symmetric	G-501	17.0	.060	.360	.187	.120	.500	n/a	n/a	n/a
		G-502	17.0	.063	.338	.182	.182	.500	n/a	n/a	n/a
		G-503	10.0	.054	.244	.190	.306	.385	.020	n/a	n/a
		G-504	13.0	.063	.309	.183	.187	.437	n/a	n/a	n/a
		G-505	17.0	.062	.375	.190	.175	.500	n/a	n/a	n/a
		G-506	14.0	.043	.319	.177	.220	.460	.020	n/a	n/a
		G-507	40.0	.070	.503	.277	.396	.751	.050	n/a	n/a
	Sym., Radiused-Edge	G-521	25.0	.062	.375	.270	.325	.625	.125	n/a	n/a
	Asymmetric	G-511	40.0	.063	.562	.180	.395	.753	n/a	.214	.118
		G-512	26.0	.115	.437	.245	.620	.625	n/a	.380	.125
		G-513	40.0	.078	.500	.304	.500	.750	n/a	.290	.132

			A Plate Thckns.	B Hole Diam.	C Inside Diam.	D Overall Height	E Outside Diam.	F Flange Thckns.	G Boss Out. Diam.	—
Shear	G-601	2.0	.056	.560	.248	.375	.750	.235	.375	—

For C-1002 material, indicate "-1" after part number (e.g. G-401-1)
 For C-1105 material, indicate "-2" after the part number (e.g. G-401-2)
 For C-1100 material, indicate "-3" after the part number (e.g. G-401-3)
 For VersaDamp material, indicate "-formulation number" after the part number (e.g. G-401-2325)

	C-1002	C-1105	C-1100	VersaDamp
Standard Grommet Color	Blue	Turquoise	Yellow	Black
Service Temperature Range	55F-105F (13C-41C)	80F-130F (27C-54C)	95F-145F (25C-63C)	-40F-212F (-40C-100C)



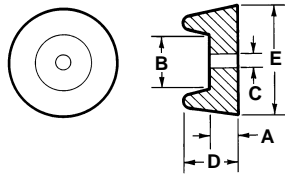
Family	Description	Load (lbs)	Dimensions (inches)								
			Recommended Maximum	A Shank Height	B Shank Diam.	C Inside Diam.	D Overall Height	E Flange Diam.	F Flange Height	G Rib Height	H Rib Width
ISODAMP	BUSHINGS Ribbed	R-444	10.0	n/a	n/a	.460	.250	.813	n/a	.078	.085
		B-434	10.0	.313	.469	.260	.563	.813	.250	.078	.085
		R-445	25.0	n/a	n/a	.457	.520	1.000	n/a	.132	.125
		B-435	25.0	.544	.473	.260	1.060	1.000	.516	.132	.135
	Non-Ribbed	B-531	17.0	.120	.360	.189	.175	.500	.055	n/a	n/a
		B-532	40.0	.132	.420	.271	.259	.750	.120	n/a	n/a
		B-533	100.0	.085	.750	.427	.325	1.265	.240	n/a	n/a

For C-1002 material, indicate "-1" after part number (e.g. G-401-1)
 For C-1105 material, indicate "-2" after the part number (e.g. G-401-2)
 For C-1100 material, indicate "-3" after the part number (e.g. G-401-3)
 For VersaDamp material, indicate "-formulation number" after the part number (e.g. G-401-2325)

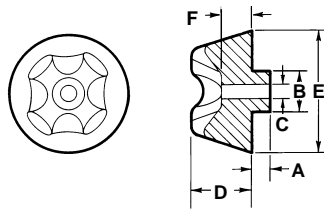
	C-1002	C-1105	C-1100	VersaDamp
Standard Grommet Color	Blue	Turquoise	Yellow	Black
Service Temperature Range	55F-105F (13C-41C)	80F-130F (27C-54C)	95F-145F (25C-63C)	-40F-212F (-40C-100C)

Dimensions given here are nominal. Exact specification print available on request.

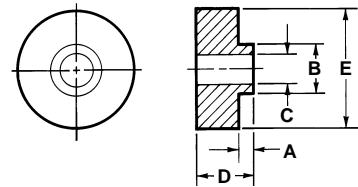
Mounting Feet



Mounting Feet

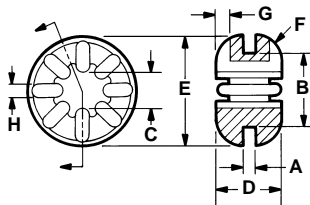


Equipment Mounts

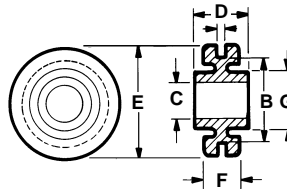


Family	Description	Load (lbs)	Dimensions (inches)						
			A Bolt Flg. Height	B Bolt Flg. Diam.	C Inside Diam.	D Overall Height	E Outside Diam.	F Bolt Flg. Height	
ISODAMP									
C-1002	MF-1010	5.0-15.0	.270	.493	.121	.521	.982	n/a	
MOUNTING FEET	MF-1010PSA	5.0-15.0	.270	.493	.121	.521	.982	n/a	
			A Shank Height	B Shank Diam.	C Inside Diam.	D Mount Height	E Mount Diam	F Bolt Flg. Height	
C-1002	L-020	10.0-20.0	.215	.500	.190	.755	1.502	.410	
MOUNTING FEET	L-021	10.0-20.0	n/a	.500	.194	.755	1.502	.410	
	L-030	10.0-20.0	.215	.509	.325	.755	1.502	.410	
	L-031	10.0-20.0	n/a	n/a	.320	.755	1.502	.410	
C-1002	ML-4250	30.0-70.0	.125	.500	.327	.625	1.172	n/a	
EQUIPMENT MOUNTS	ML-42100	60.0-140.0	.188	.750	.443	.820	1.656	n/a	
	ML-42200	120.0-300.0	.260	1.010	.575	1.007	2.371	n/a	
	ML-42500	300.0-700.0	.355	1.000	.549	1.385	3.667	n/a	

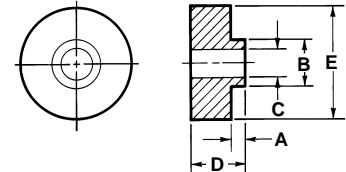
Symmetric, Internally Ribbed



Shear



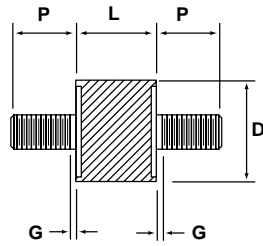
Equipment Mounts



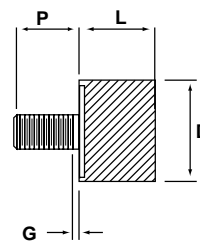
Family	Description	Load (lbs)	Dimensions (inches)								
			A Plate Thckns.	B Hole Diam.	C Inside Diam.	D Overall Height	E Outside Diam.	F Edge Radius	G Rib Height	H Rib Width	
ISOLOSS											
HD/VL GROMMETS											
	Symmetric,	G-411-H	6.0	.063	.375	.188	.313	.555	.125	.063	.063
	Internally Ribbed	G-411-V	1.0	.054	.377	.185	.317	.565	.125	.063	.063
				A Plate Thckns.	B Hole Diam.	C Inside Diam.	D Overall Height	E Outside Diam.	F Flange Thckns.	G Boss Out. Diam.	H Rib Width
	Shear	G-601-H	2.0	.056	.565	.245	.375	.750	.237	.375	n/a
		G-601-V	0.3	.050	.569	.245	.380	.755	.245	.380	n/a
				A Shank Height	B Shank Diam.	C Inside Diam.	D Overall Height	E Flange Diam.	F Flange Thckns.	G Boss Out. Diam.	H Rib Width
EQUIPMENT MOUNTS	ML-4250-H	30.0-70.0	.125	.495	.309	.629	1.169	n/a	n/a	n/a	
	ML-4250-V	5.0-10.0	.126	.500	.313	.638	1.190	n/a	n/a	n/a	

"H" after part number indicates ISOLOSS HD material; "V" after part number indicates ISOLOSS VL material. Dimensions given here are nominal. Exact specification print available on request.

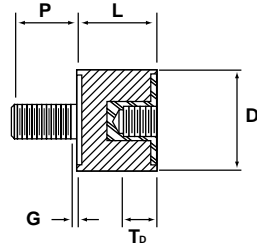
Male-Male Sandwich Mounts



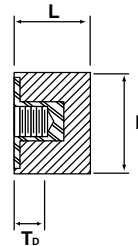
Male-Blank Sandwich Mounts



Male-Female Sandwich Mounts



Female-Blank Sandwich Mounts



Family	Description	Load (lbs)		Dimensions		Metal Insert			
		Compression Maximum	Shear	D Diam. (in)	L Length (in)	Type	P Overall Height	G Grip (in)	T _b Depth (in)
ISOLOSS									
HD/VL SANDWICH MOUNTS	MM-100-UC04-H	4.0	1.5	.280	.320	#4-40	.200	.060	n/a
Male-Male	MM-100-UC04-V	0.5	0.2	.280	.320	#4-40	.200	.060	n/a
	MM-200-UC06-H	8.0	3.0	.405	.500	#6-32	.375	.060	n/a
	MM-200-UC06-V	1.0	0.4	.405	.500	#6-32	.375	.060	n/a
	MM-200-UC08-H	8.0	3.0	.405	.500	#8-32	.375	.060	n/a
	MM-200-UC08-V	1.0	0.4	.405	.500	#8-32	.375	.060	n/a
	MM-300-UC25-H	20.0	5.0	.625	.625	1/4-20	.500	.100	n/a
	MM-400-UC31-H	50.0	13.0	1.00	.750	5/16-18	.625	.100	n/a
	Male-Blank	MB-100-UC04-H	4.0		.280	.320	#4-40	.200	.060
MB-100-UC04-V		0.5		.280	.320	#4-40	.200	.060	n/a
MB-200-UC06-H		8.0		.405	.500	#6-32	.375	.060	n/a
MB-200-UC06-V		1.0		.405	.500	#6-32	.375	.060	n/a
MB-200-UC08-H		8.0		.405	.500	#8-32	.375	.060	n/a
MB-200-UC08-V		1.0		.405	.500	#8-32	.375	.060	n/a
MB-300-UC25-H		20.0		.625	.625	1/4-20	.500	.100	n/a
MB-400-UC31-H		50.0		1.00	.750	5/16-18	.625	.100	n/a
Male-Female	MF-100-UC04-H	2.0	0.8	.280	.320	#4-40	.200	.060	.110
	MF-100-UC04-V	0.3	0.1	.280	.320	#4-40	.200	.060	.110
	MF-200-UC06-H	4.0	2.0	.405	.500	#6-32	.375	.060	.160
	MF-200-UC06-V	0.6	0.3	.405	.500	#6-32	.375	.060	.160
	MF-200-UC08-H	4.0	2.0	.405	.500	#8-32	.375	.060	.160
	MF-200-UC08-V	0.6	0.3	.405	.500	#8-32	.375	.060	.160
	MF-300-UC25-H	12.0	3.5	.625	.625	1/4-20	.500	.100	.260
	MF-400-UC31-H	45.0	10.0	1.00	.750	5/16-18	.625	.100	.290
Female-Blank	FB-100-UC04-H	2.0		.280	.320	#4-40	n/a	n/a	.110
	FB-100-UC04-V	0.3		.280	.320	#4-40	n/a	n/a	.110
	FB-200-UC06-H	4.0		.405	.500	#6-32	n/a	n/a	.160
	FB-200-UC06-V	0.6		.405	.500	#6-32	n/a	n/a	.160
	FB-200-UC08-H	4.0		.405	.500	#8-32	n/a	n/a	.160
	FB-200-UC08-V	0.6		.405	.500	#8-32	n/a	n/a	.160
	FB-300-UC25-H	12.0		.625	.625	1/4-20	n/a	n/a	.260
	FB-400-UC31-H	45.0		1.00	.750	5/16-18	n/a	n/a	.290

"H" after part number indicates ISOLOSS HD material; "V" after part number indicates ISOLOSS VL material. Dimensions given here are nominal. Exact specification print available on request.