



PLUGS threaded

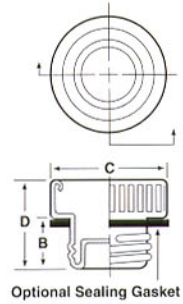
ADP Series Threaded Aluminum Plugs For Flareless Tube And Hose Assemblies



Series ADP Plugs have a dimpled nose section that forms a low-pressure seal with flareless tube ends. The addition of a neoprene shoulder gasket enables the ADP-GN to provide a positive seal on the spot-face of the O-ring port. Gaskets are also optionally available in Butyl or Buna N rubber.



MATERIAL: 3003-0 Aluminum Alloy
COLOR: Natural



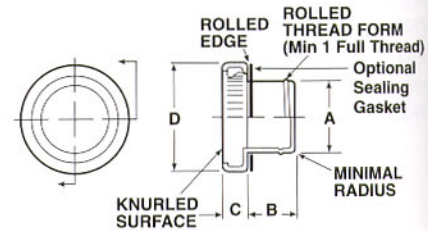
AFO Series Threaded Aluminum Plugs For Flat-Faced O-Ring Hydraulic Fittings



Series AFO Plugs are designed for positive, metal-to-metal threaded protection of fluid lines and fittings. Available with optional neoprene gaskets. Sealing gaskets are also available in Butyl or Buna N rubber.



MATERIAL: 3003-0 Aluminum Alloy
COLOR: Natural



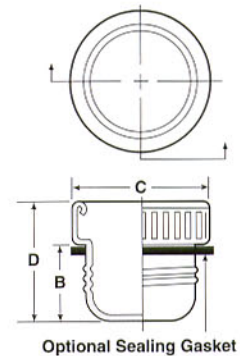
ASP Series Threaded Aluminum Plugs for 37° Flared Fittings and Straight-Threaded Ports



Designed for protection of 37° flare fittings and straight-threaded ports, the Series ASP Plug has a nose section that seals on flared fittings without a gasket. The ASP-GN has an added neoprene shoulder gasket for low-pressure sealing of threaded ports. Butyl or Buna N gaskets are also available.



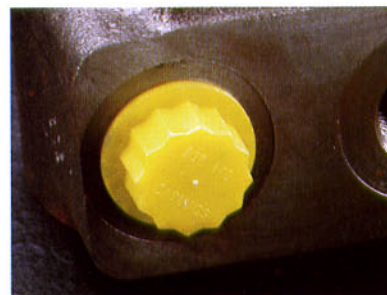
MATERIAL: 3003-0 Aluminum Alloy
COLOR: Natural



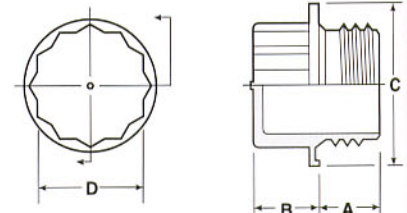
BSP Series Plastic Threaded Plugs For British Standard Pipe Fittings



Series BSP Plugs provide positive protective sealing on ports threaded for British Standard Pipe fittings. A unique flange compression seal prevents leakage of residual fluid. Designed for easy finger installation, a 12-point head enables socket or wrench tightening for a positive seal.



MATERIAL: Polypropylene
COLOR*: Yellow



threaded PLUGS



Applicable Specs.: MIL-C-5501/2, NAS-842

ADP Series

Caplug No.	Dimensions								Packaging				Caplug No.
	To Fit Tube Size	To Fit Thread Size	B		C		D		Standard Carton		Mini Pak Quantity		
			in	mm	in	mm	in	mm	Shipping Wt.(Approx.) lbs	kgs		No. of Pieces	
ADP-2	5/32	5/16-24	.34	8.64	.47	11.94	.52	13.21	7	3.2	5500	1000	ADP-2
ADP-3	3/16	3/8-24	.28	7.11	.57	14.48	.52	13.21	10	4.5	5000	1000	ADP-3
ADP-4	1/4	7/16-20	.29	7.37	.61	15.49	.54	13.72	9	4.0	7000	1000	ADP-4
ADP-5	5/16	1/2-20	.32	8.13	.70	17.78	.55	13.97	11	4.9	5500	1000	ADP-5
ADP-6	3/8	9/16-18	.33	8.38	.76	19.30	.60	15.24	12	5.4	4000	1000	ADP-6
ADP-7	7/16	5/8-18	.31	7.87	.90	22.86	.59	14.99	16	7.2	5000	1000	ADP-7
ADP-8	1/2	3/4-16	.43	10.92	.94	23.88	.72	18.29	15	6.8	4700	800	ADP-8
ADP-10	5/8	7/8-14	.49	12.45	1.11	28.20	.74	18.80	12	5.4	3500	500	ADP-10
ADP-12	3/4	1 1/16-12	.47	11.94	1.38	35.05	.81	20.57	26	11.7	1900	500	ADP-12
ADP-16	1	1 5/16-12	.45	11.43	1.53	38.86	.82	20.83	13	5.8	1200	200	ADP-16

AFO Series

Caplug No.	Dimensions								Packaging				Caplug No.	
	To Fit Thread Size	A		B		C		D		Standard Carton		Mini Pak Quantity		
		in	mm	in	mm	in	mm	in	mm	Shipping Wt. (Approx.) lbs	kgs			No. of Pieces
AFO-60	11/16-16	.607	15.42	.48	12.19	.29	7.37	.94	23.88	6	2.7	4500	1000	AFO-60
AFO-80	13/16-16	.730	18.54	.53	13.46	.29	7.37	1.11	28.20	7	3.1	3200	400	AFO-80
AFO-100	1-14	.907	23.04	.63	16.00	.31	7.87	1.38	35.05	10	4.5	1700	300	AFO-100
AFO-120	1 3/16-12	1.080	27.43	.70	17.78	.31	7.87	1.38	35.05	20	9.0	1400	300	AFO-120
AFO-160	1 7/16-12	1.330	33.78	.70	17.78	.43	10.92	2.00	50.80	22	9.9	650	100	AFO-160

Applicable Specs.: MIL-C-5501/1, NAS-818, NAS-836

ASP Series

Caplug No.	Dimensions								Packaging				Caplug No.
	To Fit Tube Size	To Fit Thread Size	B		C		D		Standard Carton		Mini Pak Quantity		
			in	mm	in	mm	in	mm	Shipping Wt. (Approx.) lbs	kgs		No. of Pieces	
ASP-3	3/16	3/8-24	0.37	9.4	0.57	14.48	0.61	15.49	7	3.1	4500	1000	ASP-3
ASP-4	1/4	7/16-20	0.46	11.7	0.61	15.49	0.71	18.03	11	4.9	5000	1000	ASP-4
ASP-5	5/16	1/2-20	0.47	11.9	0.70	17.78	0.70	17.78	15	6.8	5000	1000	ASP-5
ASP-6	3/8	9/16-18	0.50	12.7	0.76	19.30	0.77	19.56	12	5.4	5000	1000	ASP-6
ASP-7	3/8	5/8-18	0.50	12.7	0.90	22.86	0.78	19.81	15	6.8	5000	1000	ASP-7
ASP-8	1/2	3/4-16	0.61	15.5	0.94	23.88	0.90	22.86	16	7.2	4000	800	ASP-8
ASP-10	5/8	7/8-14	0.70	17.8	1.11	28.20	0.95	24.13	12	5.4	3000	500	ASP-10
ASP-12	3/4	1 1/16-12	0.65	16.5	1.38	35.05	0.99	25.15	18	8.1	1700	500	ASP-12
ASP-16	1	1 5/16-12	0.71	18.0	1.53	38.86	1.08	27.43	13	5.8	1150	200	ASP-16

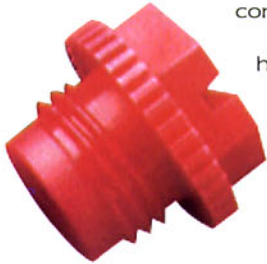
BSP Series

Caplug No.	Dimensions								Packaging				Caplug No.
	To Fit Thread Size	A		B		C		Wrench Size	Standard Carton		Mini Pak Quantity		
		in	mm	in	mm	in	mm		Shipping Wt.(Approx.) lbs	kgs		No. of Pieces	
BSP-1/4	G 1/4	.36	9.14	.33	8.38	.728	18.49	11	15	6.8	5000	1000	BSP-1/4
BSP-3/8	G 3/8	.36	9.14	.33	8.38	.886	22.51	14	18	8.1	4000	800	BSP-3/8
BSP-1/2	G 1/2	.43	10.92	.44	11.18	1.043	26.49	18	16	7.2	2000	400	BSP-1/2



PLUGS threaded

RP Series Threaded Plugs

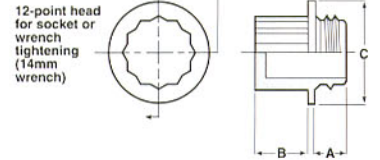
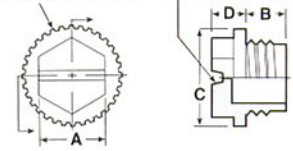


Originated for automotive and air conditioning tube fittings, Series RP is a general-purpose, high-strength, machine thread plug adaptable to a multitude of applications. Serrated for finger tightening, they also have a slotted hex head for screwdriver, nutdriver or wrench installation where desired.

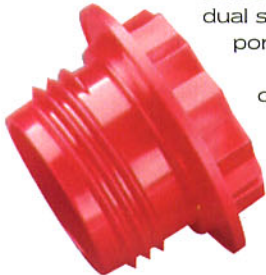


MATERIAL: Polypropylene
COLOR: RP*, Red
RP-M*, White

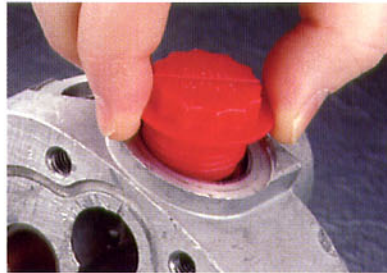
SERRATED EDGE **SCREWDRIVER SLOT**



RPO Series Threaded Plugs

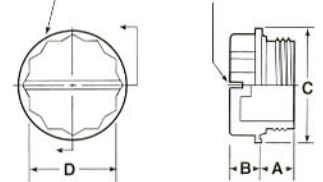


Series RPO Plugs provide a positive dual seal on SAE straight threaded ports. Integral O-ring-type bead seats into bevel of threaded opening to prevent oil or fluid leakage. A lip on the flange compresses against the surface to keep contaminants from the spot face. Slotted, 12-point head for screwdriver, socket or wrench tightening.



MATERIAL: High Density Polyethylene
COLOR: Red

12-point head for socket or wrench tightening **SCREWDRIVER SLOT**



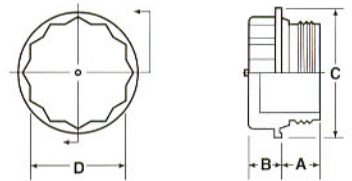
RPO-M Series Threaded Plugs



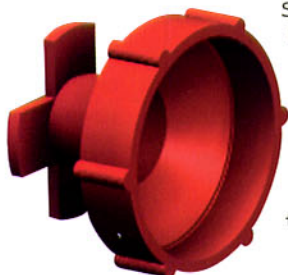
Series RPO-M Plugs provide dual seals on ISO fluid power system metric ports. An integral O-ring-type bead seats snugly into the bevel of the threaded opening to prevent oil or fluid leakage. A 12-point head makes it possible to tighten with socket or wrench.



MATERIAL: Polypropylene
COLOR: Green



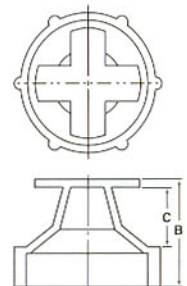
UTP Series Universal Thread Plugs



Series UTP Universal Thread Plugs offer unique flexibility. Each plug is designed to fit many different thread sizes. Series UTP is excellent for easy installation by just pushing the plug into a female threaded port. A small turn is all that's required to lock the plug in place.



MATERIAL: Low Density Polyethylene
COLOR: Red



threaded PLUGS



Applicable Specs.: MIL-C-52078, MIL-C-5501/10, NAS-838

RP Series

Caplug No.	Dimensions									Packaging				Caplug No.
	To Fit Thread Size	A		B		C		D		Standard Carton		Mini Pak Quantity		
		in	mm	in	mm	in	mm	in	mm	Shipping Wt. (Approx.) lbs	kgs		No. of Pieces	
RP-7-14	7/16-14	0.43	10.92	0.30	7.62	0.62	15.75	0.28	7.11	11	4.9	5000	1000	RP-7-14
RP-7-20	7/16-20	0.43	10.92	0.30	7.62	0.62	15.75	0.28	7.11	11	4.9	5000	1000	RP-7-20
RP-8-13	1/2-13	0.495	12.57	0.32	8.13	0.69	17.53	0.26	6.60	15	6.8	5000	1000	RP-8-13
RP-8-20	1/2-20	0.50	12.70	0.32	8.13	0.69	17.53	0.25	6.35	15	6.8	5000	1000	RP-8-20
RP-10	5/8-18	0.56	14.22	0.35	8.89	0.81	20.57	0.27	6.86	19	8.6	5000	1000	RP-10
RP-12	3/4-16	0.68	17.27	0.44	11.18	0.94	23.88	0.27	6.86	14	6.3	2500	500	RP-12
RP-14	7/8-14	0.75	19.05	0.50	12.70	1.06	26.93	0.32	8.13	18	8.1	2500	500	RP-14
RP-M16x1.5	16mmx1.5mm	0.28	7.11	0.52	13.21	0.89	22.61	-	-	16	7.2	4000	800	RP-M16x1.5

RPO Series

Caplug No.	Dimensions								Packaging				Caplug No.
	To Fit Thread Size	A		B		C		12-Point Socket Size D	Standard Carton		Mini Pak Quantity		
		in	mm	in	mm	in	mm		Shipping Wt. (Approx.) lbs	kgs		No. of Pieces	
RPO-104	7/16-20	0.34	8.64	0.26	6.60	0.66	16.76	3/8	19	8.6	8000	1000	RPO-104
RPO-105	1/2-20	0.34	8.64	0.30	7.62	0.73	18.54	7/16	17	7.6	6000	1000	RPO-105
RPO-106	9/16-18	0.36	9.14	0.30	7.62	0.80	20.32	1/2	18	8.1	6000	1000	RPO-106
RPO-108	3/4-16	0.41	10.41	0.31	7.87	1.02	25.91	11/16	16	7.2	3000	600	RPO-108
RPO-110	7/8-14	0.47	11.94	0.31	7.87	1.16	29.47	13/16	17	7.6	2000	400	RPO-110
RPO-112	1 1/16-12	0.61	15.49	0.31	7.87	1.45	36.83	1	14	6.3	1000	200	RPO-112
RPO-116	1 5/16-12	0.61	15.49	0.33	8.38	1.74	44.20	1 1/4	18	8.1	1000	200	RPO-116
RPO-120	1 5/8-12	0.61	15.49	0.33	8.38	2.17	55.12	1 9/16	19	8.6	700	140	RPO-120

RPO-M Series

Caplug No.	Dimensions								Packaging				Caplug No.
	To Fit Thread Size	A		B		C		12-Point Socket Size D	Standard Carton		Mini Pak Quantity		
		in	mm	in	mm	in	mm		Shipping Wt. (Approx.) lbs	kgs		No. of Pieces	
RPO-M12x1.5	12x1.5	0.41	10.41	0.34	8.64	0.73	18.54	10	15	6.8	5000	1000	RPO-M12x1.5
RPO-M14x1.5	14x1.5	0.41	10.41	0.38	9.65	0.81	20.57	12	16	7.2	5000	1000	RPO-M14x1.5
RPO-M18x1.5	18x1.5	0.41	10.41	0.44	11.18	0.97	24.64	16	18	8.1	3000	600	RPO-M18x1.5
RPO-M22x1.5	22x1.5	0.41	10.41	0.44	11.18	1.12	28.45	20	17	7.6	2000	400	RPO-M22x1.5
RPO-M27x2	27x2	0.41	10.41	0.44	11.18	1.36	34.54	24	19	8.6	2000	400	RPO-M27x2

UTP Series

Caplug No.	Dimensions						Packaging				Caplug No.
	To Fit Thread Size	B		C		Standard Carton		Mini Pak Quantity			
		in	mm	in	mm	Shipping Wt. (Approx.) lbs	kgs		No. of Pieces		
UTP-40	1/8" NPT, 7/16" UNF, 1/8" BSP, M10	∅	∅	∅	∅	5	2.2	5000	1000	UTP-40	
UTP-50	1/2" UNF, 1/4" BSP, M11-12	∅	∅	∅	∅	9	4.1	5000	1000	UTP-50	
UTP-60	1/4" NPT, 9/16" UNF, M14	∅	∅	∅	∅	12	5.4	5000	1000	UTP-60	
UTP-80	3/4" UNF, 3/8" BSP, M16-20	∅	∅	∅	∅	17	7.7	5000	1000	UTP-80	
UTP-100	1" UNF, 1/2"-5/8" BSP, M20-24	∅	∅	∅	∅	17	7.7	3000	600	UTP-100	

∅ Consult the factory



EDGE LINERS & GROMMETS

EGL Series Edge Liners for Sheet Metal and Pipe Ends

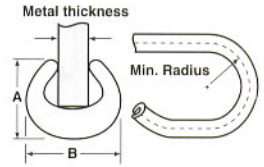
The Caplugs Edge Liner offers a convenient method for covering the sharp edges of large or irregularly shaped holes in sheet metal. It is pressed in place around the perimeter of the hole. Series EGL-22 is designed specifically to provide spacers when stacking sheet metal or board to protect the face of the sheet against scratches, allow for air circulation between sheets, and protect workers' hands against sharp edges.



EGL-11-2
EGL-11-3

MATERIAL: High Density Polyethylene

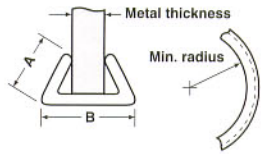
COLOR*: Black



EGL-12-1/4
EGL-12-1/2
EGL-12-3/4

MATERIAL: Vinyl

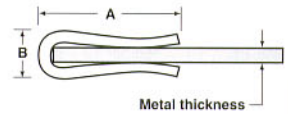
COLOR*: Black



EGL-22-4
EGL-22-6

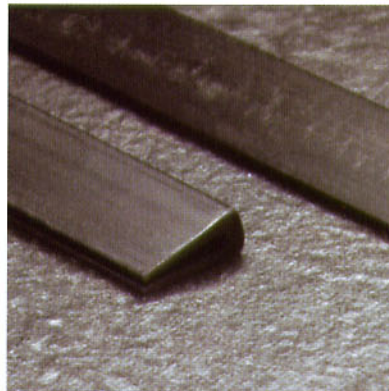
MATERIAL: Low Density Polyethylene

COLOR*: Natural



CEG Series Conductive Edge Liners

Series CEG Edge Liners securely grip each contact of edgeboard connectors and are also used for single in-line devices. These extruded conductive edge liners are the most cost-effective way to provide both ESD and physical protection for circuit boards and sub-assemblies.



MATERIAL: Conductive Polyethylene
COLOR: Black

