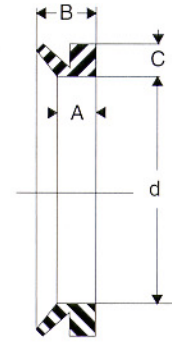
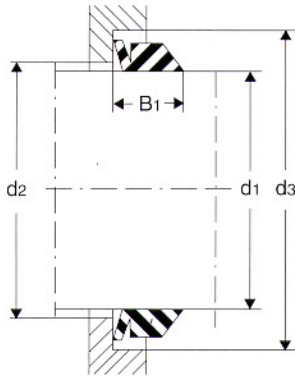




V-RING S



N°	d1 mm	dmm	C	A	B	B1 mm	t	d2	d3
V- 5S	4.5- 5.5	4	2	3.9	5.2	4.5	± 0.4	d ₁ +1	d ₁ +6
V- 6S	5.5- 6.5	5	"	"	"	"	"	"	"
V- 7S	6.5- 8	6	"	"	"	"	"	"	"
V- 8S	8 - 9.5	7	2	3.9	5.2	4.5	± 0.4	d ₁ +1	d ₁ +6
V- 10S	9.5- 11.5	9	3	5.6	7.7	6.7	± 0.6	d ₁ +2	d ₁ +9
V- 12S	11.5- 13.5	10.5	"	"	"	"	"	"	"
V- 14S	13.5- 15.5	12.5	"	"	"	"	"	"	"
V- 16S	15.5- 17.5	14	"	"	"	"	"	"	"
V- 18S	17.5- 19.5	16	3	5.6	7.7	6.7	± 0.6	"	d ₁ +9
V- 20S	19 - 21	18	4	7.7	10.5	9.0	± 0.8	"	d ₁ +12
V- 22S	21 - 24	20	"	"	"	"	"	"	"
V- 25S	24 - 27	22	"	"	"	"	"	d ₁ +2	"
V- 28S	27 - 29	25	"	"	"	"	"	d ₁ +3	"
V- 30S	29 - 31	27	"	"	"	"	"	"	"
V- 32S	31 - 33	29	"	"	"	"	"	"	"
V- 35S	33 - 36	31	"	"	"	"	"	"	"
V- 38S	36 - 38	34	4	7.7	10.5	9.0	± 0.8	"	d ₁ +12
V- 40S	38 - 43	36	5	9.5	13.0	11.0	± 1.0	d ₁ +3	d ₁ +15
V- 45S	43 - 48	40	"	"	"	"	"	"	"
V- 50S	48 - 53	45	"	"	"	"	"	"	"
V- 55S	53 - 58	49	"	"	"	"	"	"	"
V- 60S	58 - 63	54	"	"	"	"	"	"	"
V- 65S	63 - 68	58	5	9.5	13.0	11.0	± 1.0	d ₁ +3	d ₁ +15
V- 70S	68 - 73	63	6	11.3	15.5	13.5	± 1.2	d ₁ +4	d ₁ +18
V- 75S	73 - 78	67	"	"	"	"	"	"	"
V- 80S	78 - 83	72	"	"	"	"	"	"	"
V- 85S	83 - 88	76	"	"	"	"	"	"	"
V- 90S	88 - 93	81	"	"	"	"	"	"	"
V- 95S	93 - 98	85	"	"	"	"	"	"	"
V-100S	98 - 105	90	6	11.3	15.5	13.5	± 1.2	d ₁ +4	d ₁ +18
V-110S	105 - 115	99	7	13.1	18.0	15.5	± 1.5	d ₁ +4	d ₁ +21
V-120S	115 - 125	108	"	"	"	"	"	"	"
V-130S	125 - 135	117	"	"	"	"	"	"	"
V-140S	135 - 145	126	"	"	"	"	"	"	"
V-150S	145 - 155	135	7	13.1	18.0	15.5	± 1.5	d ₁ +4	d ₁ +21
V-160S	155 - 165	144	8	15.0	20.5	18.0	± 1.8	d ₁ +5	d ₁ +24
V-170S	165 - 175	153	"	"	"	"	"	"	"
V-180S	175 - 185	162	"	"	"	"	"	"	"
V-190S	185 - 195	171	"	"	"	"	"	"	"
V-199S	195 - 210	180	8	15.0	20.5	18.0	± 1.8	d ₁ +5	d ₁ +24